

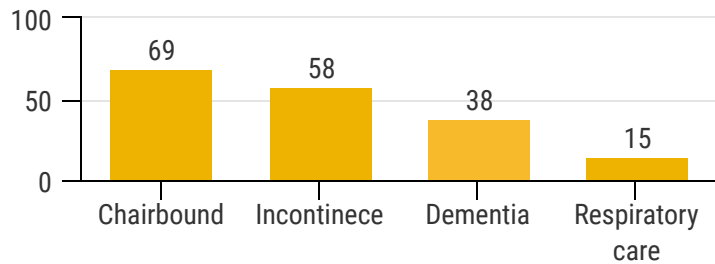
SNF Patient Profiles & Medi-Cal Reimbursement Rates



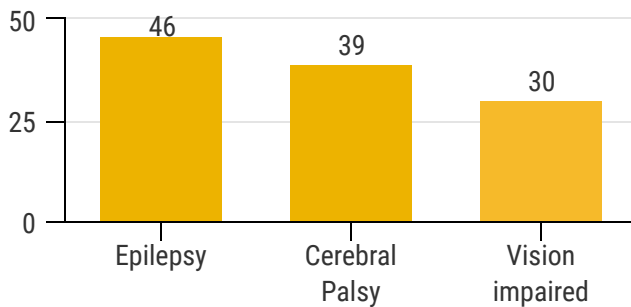
California's 1,200 skilled nursing facilities (SNFs) provide critical care to approximately **350,000 patients** a year. Our services range from assistance with essential daily activities to 24-hour supervision and medical care for the sickest and most frail.

The average age of nursing care patients is 75 years old, with mobility and cognitive conditions.

% of Nursing Care Patients



% of ICF Patients



Intermediate Care Facilities (ICFs) provide 24-hour care to individuals with developmental disabilities.

Despite caring for our most vulnerable population, Medi-Cal reimburses nursing care providers **\$38 LESS** than the actual cost of care per patient per day.

Actual Costs

\$261

Medi-Cal Payment

\$223

Shortfall

-\$38 per patient/per day

Based on DHCS 2022 rate file, which relies on cost data from 2019 and is three years behind market costs.

Medi-Cal underfunding leads to staffing shortages and less individual care.